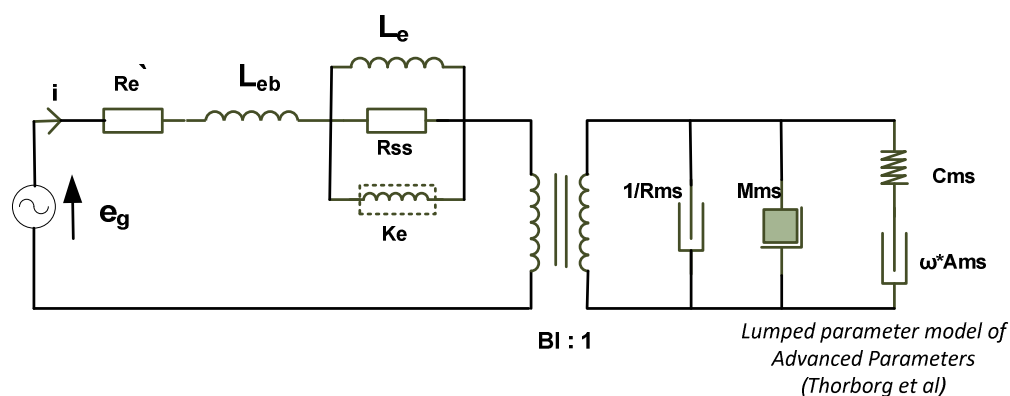


26W/8861T00



Electrical data

DC resistance ($R_{e'}$)	6.34	[Ω]
Free inductance (L_{eb})	0.165	[mH]
Bound inductance (L_e)	11.05	[mH]
Semi inductance (K_e)	0.028	SH
Shunt resistance (R_{ss})	203	[Ω]

Mechanical data

Force factor (BI)	8.76	[Tm]
Moving mass (M_{ms})	45.5	[g]
Compliance (C_{ms})	0.77	[mm/N]
Admittance (A_{ms})	0.08	[mm/N]
Mechanical resistance (R_{ms})	1.04	[Ns/m]